

# MODULE 11 L03

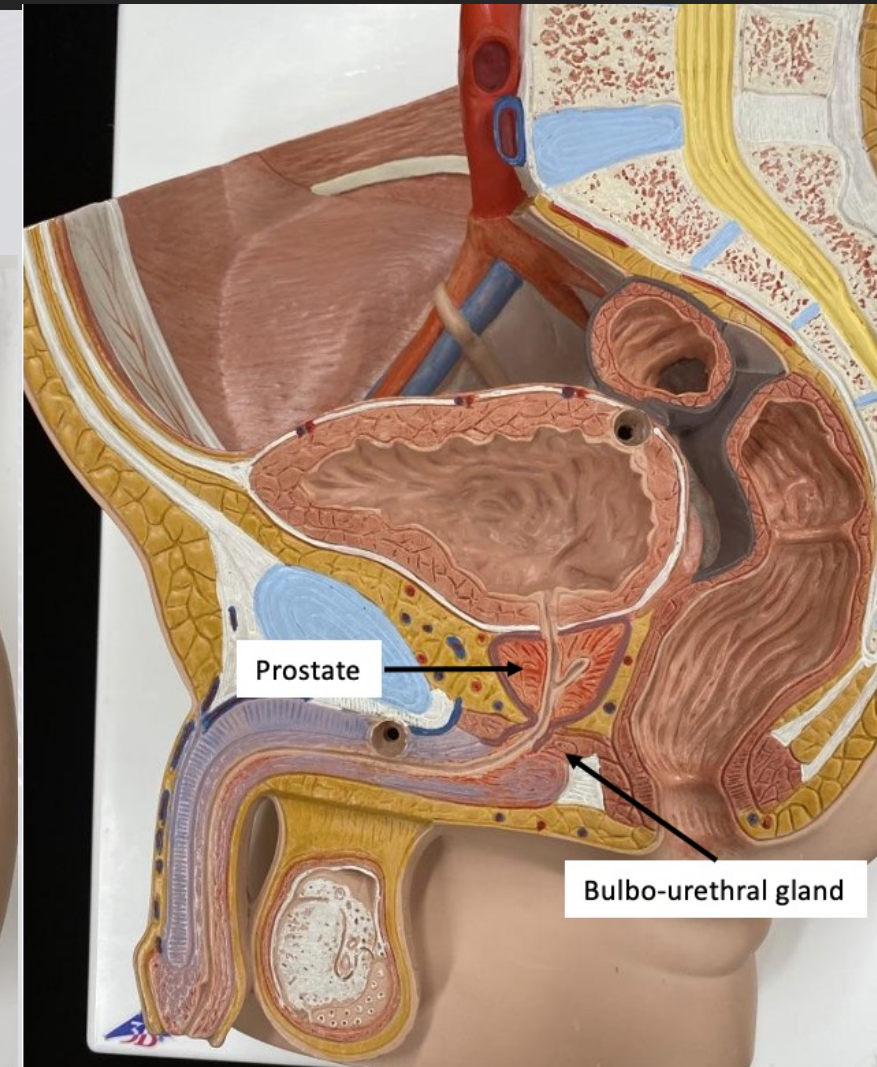
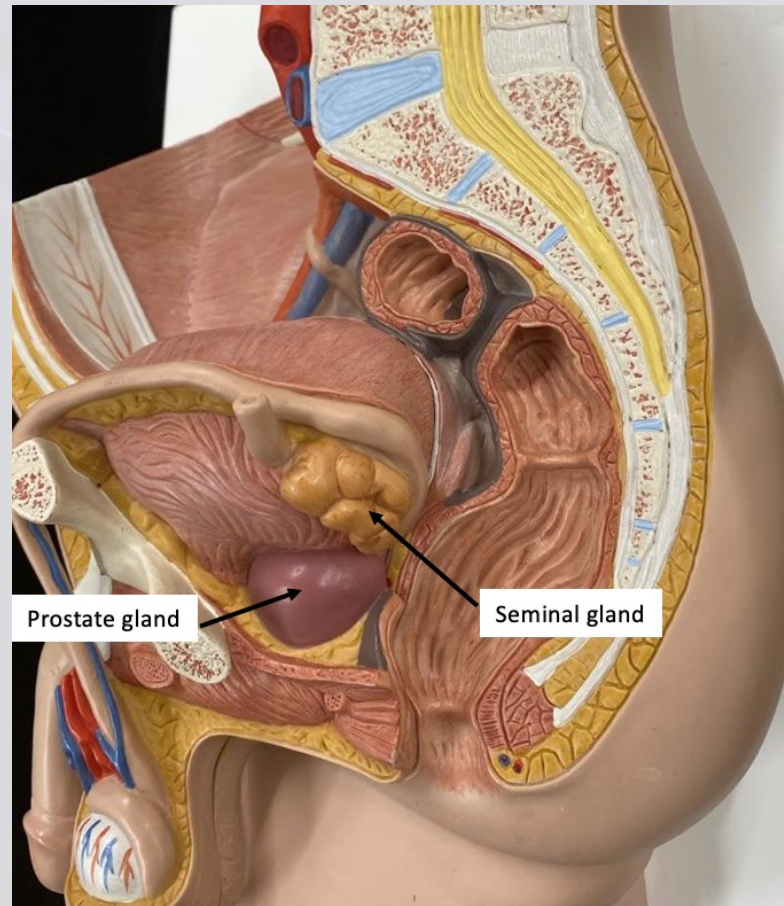
## Male Reproductive System: Accessory Glands

Dr. Lisa Brinn  
[lbrinn@fiu.edu](mailto:lbrinn@fiu.edu)



# Accessory Glands

- A. Seminal glands
- B. Prostate gland
- C. Bulbourethral glands

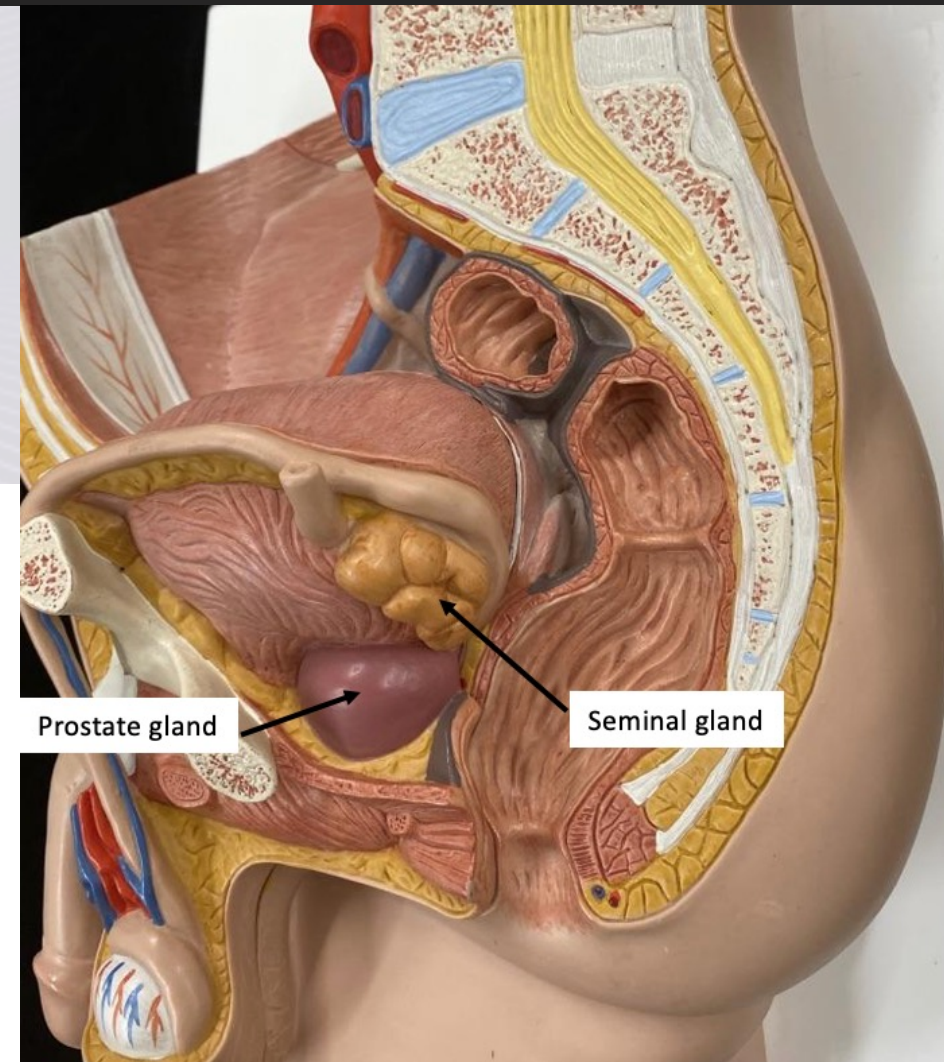
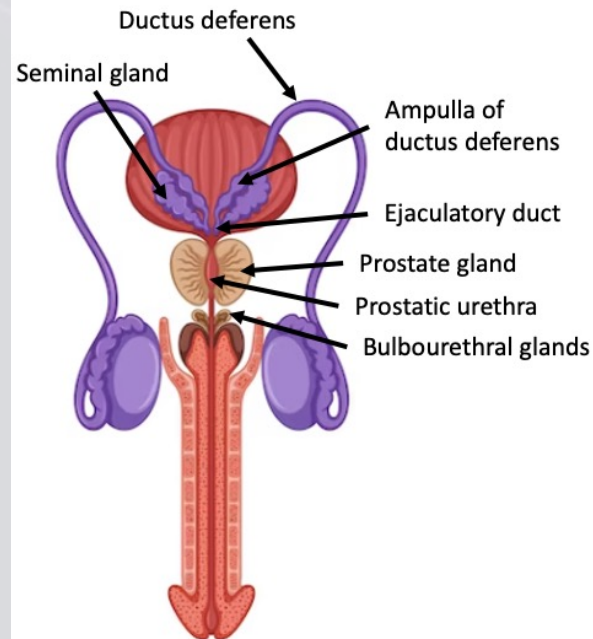




# Seminal Glands

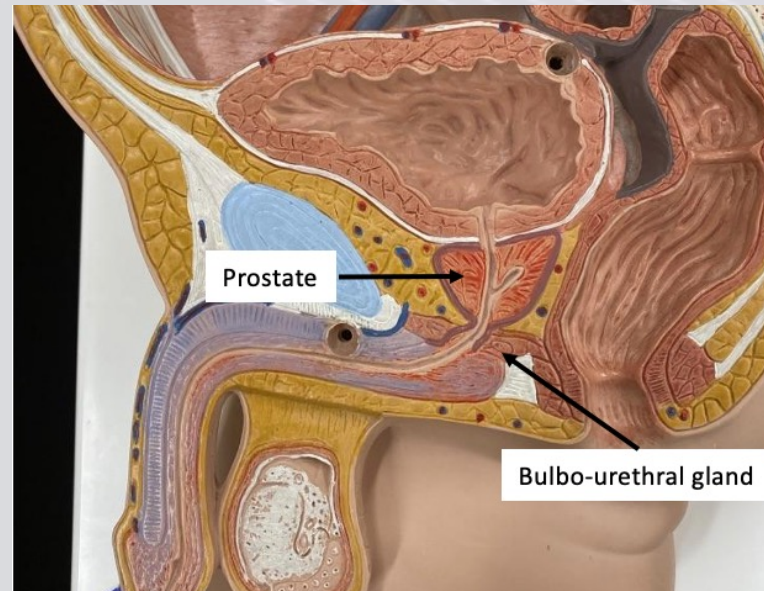
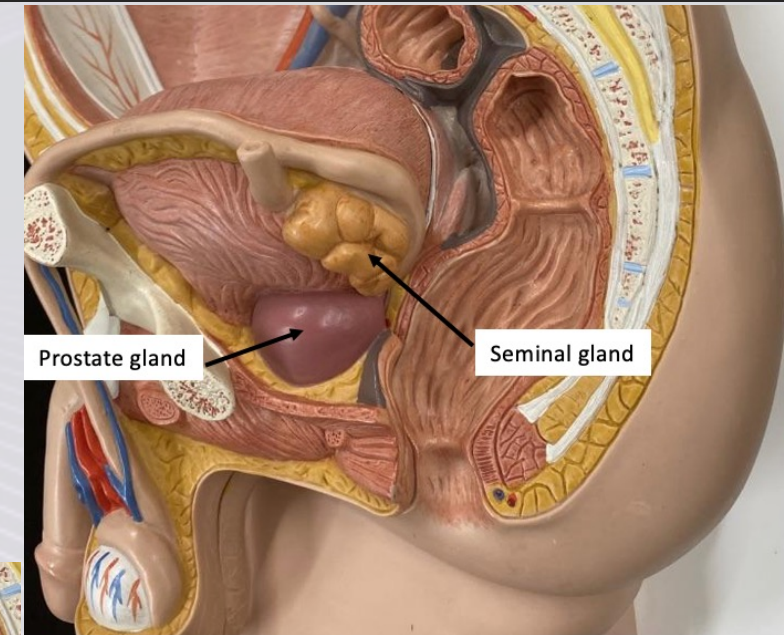
- Also known as seminal vesicles
- Contribute to 60% of semen volume
- Vesicular fluid:
  - ❖ Prostaglandins
  - ❖ Clotting proteins
  - ❖ Fructose

} alkaline, viscous fluid



# Prostate Gland

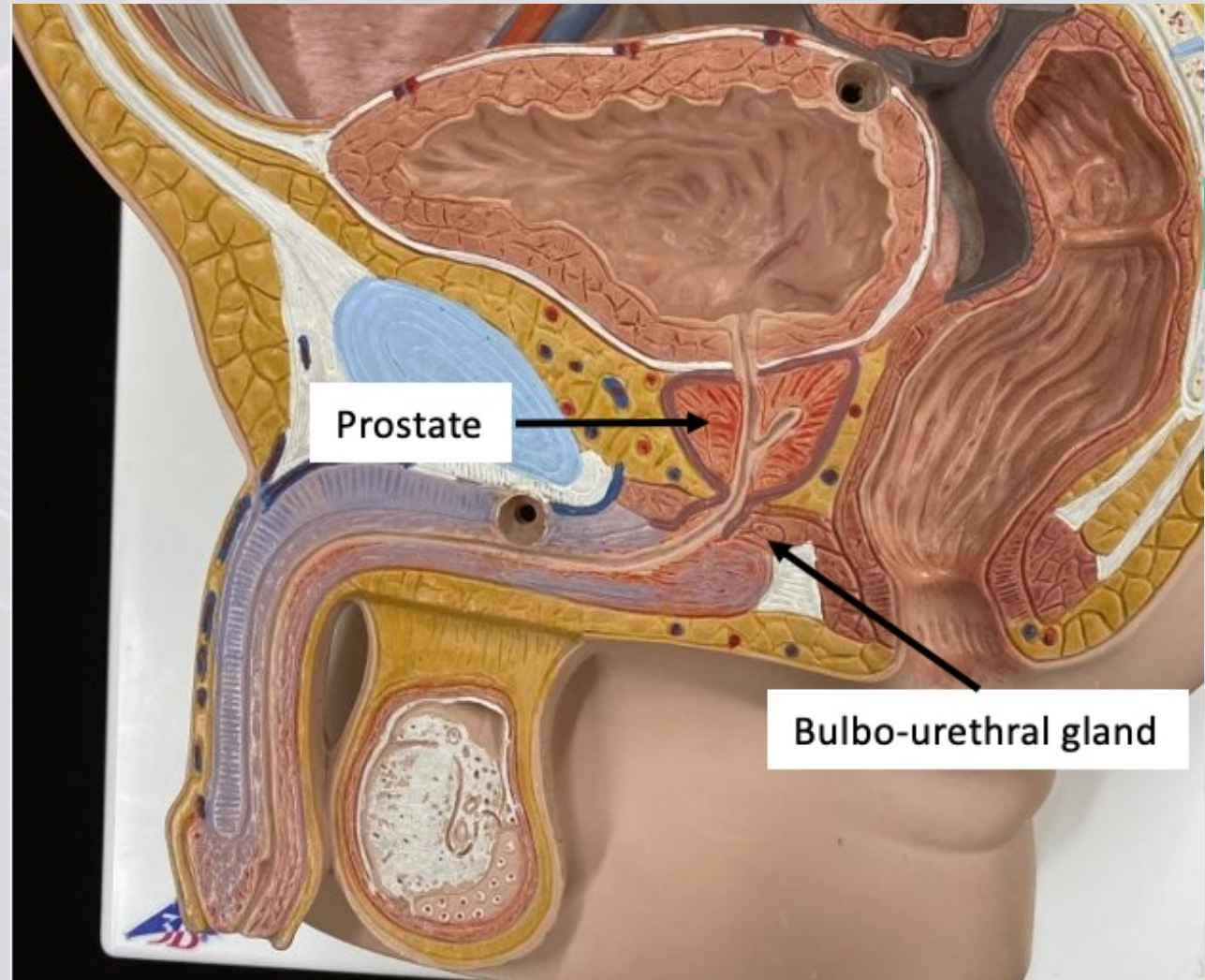
- Small, rounded, muscular organ
- Encircles prostatic urethra
- Contributes to 20-30% of semen volume
- Secretes milky, slightly acidic solution
  - ❖ Seminalplasmin





# Bulbourethral Gland

- Also called Cowper's glands
- Secrete alkaline fluid
  - ❖ Mucus



# Semen

- Ejaculation
  - ❖ 2-5mL of semen
- Ejaculate
  - ❖ Contains:
    - Spermatozoa
    - Seminal fluid
      - Seminal glands (60%)
      - Prostate glands (30%)
      - Nurse cells and epididymis (5%)
      - Bulbourethral glands (5%)
    - Enzymes
      - Proteases
      - Seminalplasmin